



**Building Plot (Plot 1), adjacent Holly Crest
Brotts Road, Normanton on Trent, Newark,
NG23 6RL**

Offers In Region Of £170,000

Tel: 01636 611 811

 **RICHARD
WATKINSON
PARTNERS**
Surveyors, Estate Agents, Valuers, Auctioneers

- Building Plot for Sale
- Full Planning Permission Granted
- Proposed 4 Bedroomed House - 1635 sq.ft
- Area 545 sq.m (0.13 acre) approx approx
- Village Primary School & Public House
- Newark 12 miles, Retford 8 miles

A building plot with full planning permission granted for a four bedroomed house (1635 sq.ft approximately) with frontage to Brotts Road and services available. The plot area is 545 sq.m (0.13 acre) or thereabouts.

The proposed house, designed with a gabled elevation, incorporates on the ground floor a hallway, living room, spacious dining kitchen, utility and WC. The first floor provides four bedrooms, master en-suite and family bathroom. The principal accommodation and extensive garden are south facing. The village is well served with amenities and conveniently located for Newark, Retford and Lincoln.

The village of Normanton on Trent is approached by country lanes from Sutton on Trent, Grassthorpe, Weston and Tuxford. There is access to the north to the A57 and A1 trunk road junctions. Newark is approximately 12 miles south and Tuxford, with a wide range of amenities including a Co-operative store and Tuxford Academy secondary school. Newark Northgate railway station provides rail services to London, Leeds and Edinburgh. Journey times to London King's Cross are just over 75 minutes.

Village amenities include a primary school and public house. There are school bus services to Tuxford Academy and public bus services also to Sutton on Trent, Tuxford and Retford. The nearby village of Sutton on Trent provides local facilities including a Co-operative store, doctors surgery, hairdressers and local amenities. The small market town of Tuxford provides also a wide range of amenities and services.

TOWN & COUNTRY PLANNING

Full planning permission is granted under Bassetlaw District Council application number 24/00365/FUL dated 9th July 2024. Conditions 3, 12, 16, 19, 20, 21 and 22 of this planning permission have been discharged. The proposed block plan, plans and elevations are attached to these particulars.

COMMUNITY INFRASTRUCTURE CHARGE (CIL)

The CIL charge is assessed on the proposal to demolish existing dwelling and attached agricultural buildings, erect three dwellings and construct new access. The total CIL charge is £3193.60 total for the three dwellings. We understand in order to apportion the CIL charge a phasing application will be necessary to Bassetlaw District Council. Self-build may qualify for exemption to the CIL charge. Applicants are advised to contact Bassetlaw District Council for information.

SERVICES

We understand mains water, electricity, and drainage are available. Applicants should make their own enquiries as to the technical matters and connection charges.

PLANNING CONDITIONS DISCHARGED

Bassetlaw District Council discharged the planning conditions below 11th December 2024. Full details are available on the Bassetlaw District Council planning portal website.

Condition 3 - Protected Species - Bats
 Condition 12 - Segmental Brick Arches
 Condition 16 - Verges and Eaves
 Condition 19 - Brick Bond
 Condition 20 - Boundary Treatments
 Condition 21 - Historic Building Record
 Condition 22 - Details of the Re-Use of Existing Brickwork

TENURE

The land is freehold.

POSSESSION

Vacant possession will be given on completion.

VIEWING

Strictly by appointment with the selling agents.



DRAWING:
proposed block/site plan

PROJECT:
new dwellings

LOCATION:
Holly Crest, Brots Road,
Normanton-on-Trent

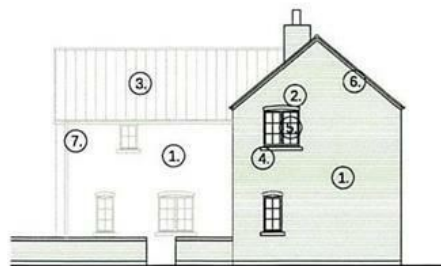
SCALE:
1:200 @ A2

0115 8700434
studio@redskyarchitects.com

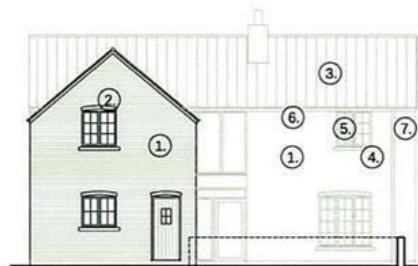
DRAWN:
march 2024

red skyarchitects

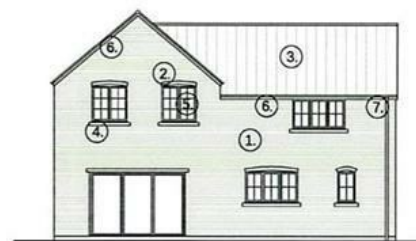
PL-002B



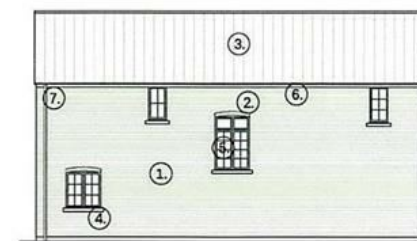
4. front elevation



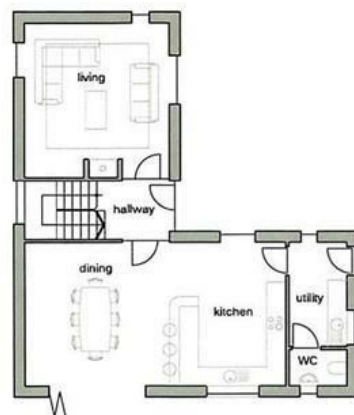
5. side elevation



6. rear elevation



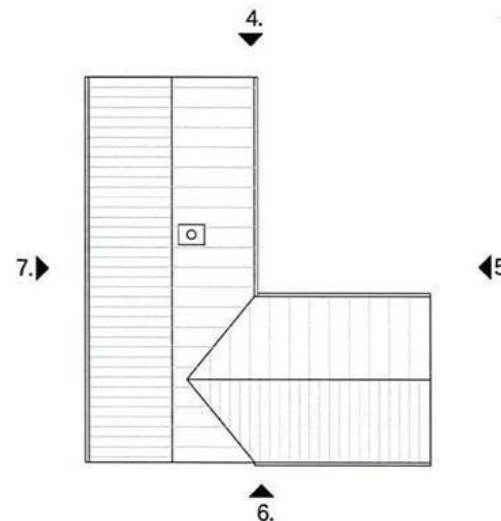
7. side elevation



1. ground floor plan



2. first floor plan



3. roof plan

materials key:

1. rural red brick
2. brick arch window head detail
3. red pantiles
4. stone sills
5. coloured doors + windows
6. feature brick corbel detail
7. black rainwater goods

DRAWING:
plot 1 plans and elevations

PROJECT:
new dwellings

LOCATION:
Holly Crest, Brofts Road,
Normanton-on-Trent

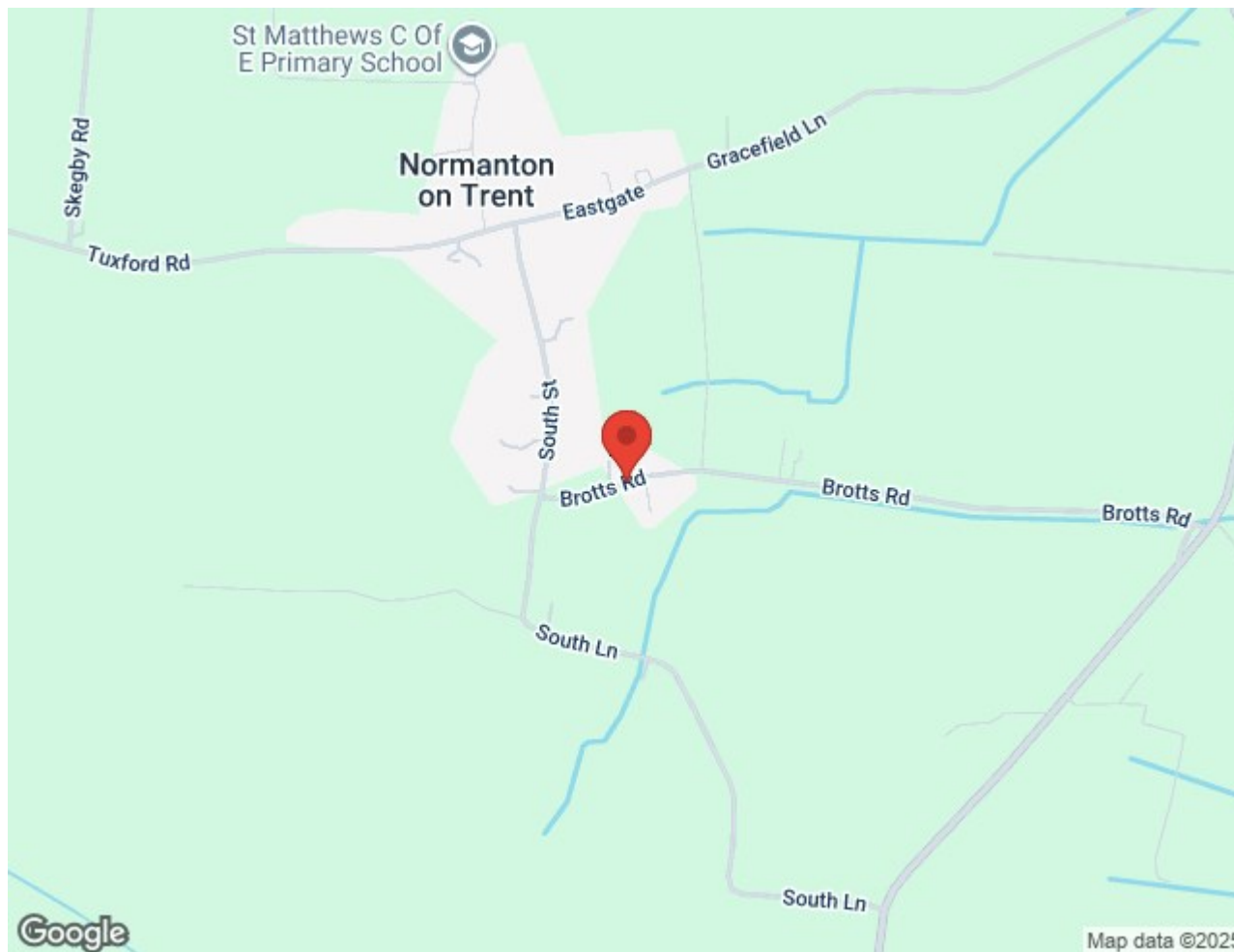
SCALE:
1:100 @ A2

DRAWN:
march 2024

PL-003B

0115 8700434
studio@redskyarchitects.com

red skyarchitects



These particulars, whilst believed to be accurate are set out as a general outline only for guidance and do not constitute any part of an offer or contract. Intending purchasers should not rely on them as statements of representation of fact, but must satisfy themselves by inspection or otherwise as to their accuracy. No person in this firm's employment has the authority to make or give any representation or warranty in respect of the property. Any fixtures and fittings not mentioned in these details are excluded from the sale price. No services or appliances which may have been included in these details have been tested by the selling agent and therefore cannot be guaranteed to be in good working order.

As part of the service we offer we may recommend ancillary services to you such as mortgage advice, solicitors and surveyors which we believe will help with your property transaction. We wish to make you aware that should you decide to proceed we may receive a referral fee or equivalent. This could be a fee, commission, payment or other reward. We will not refer your details unless you have provided consent for us to do so. You are not under any obligation to provide us with your consent or to use any of these services. You are also free to choose an alternative provider.

Thinking of selling? For a FREE no obligation quotation call 01636 611 811



RICS



Richard Watkinson & Partners is the trading name of Richard Watkinson Ltd.
Registered in England. Ltd Registration number: 07140024

25 Stodman Street,
Newark NG24 1AT
Tel: 01636 611 811
Email: newark@richardwatkinson.co.uk



**RICHARD
WATKINSON
PARTNERS**

Surveyors, Estate Agents, Valuers, Auctioneers